



MWS 18-12

12V 18Ah

Compliance with standards

PN-EN 60896-21:2007
 PN-EN 60896-22:2007
 PN-EN 61056-1:2008
 PN-EN 61056-2:2003(U)
 PN-E-83016:1999

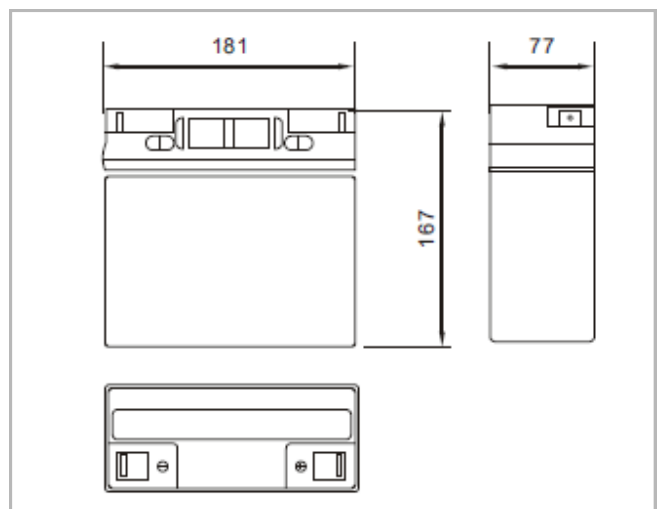
Service life is 3-5 years for 20-25 °C .



Specification

Nominal voltage	12 V	
Nominal capacity	18,0 Ah	
Dimensions	Lenght	181 mm
	Width	77 mm
	Height	167 mm
	Total height	167 mm
Weight	5,25 kg	

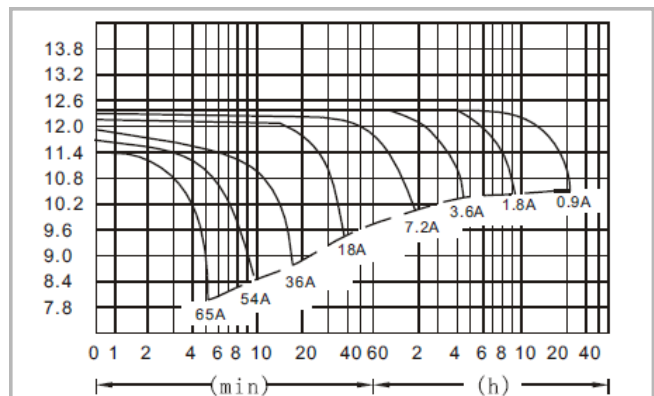
Dimensions



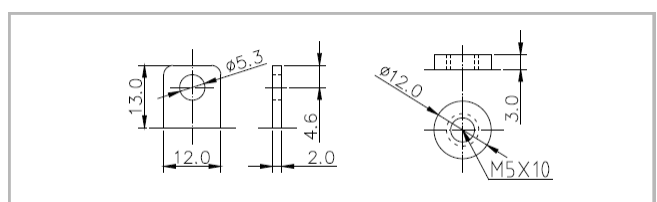
Characteristic

Capacity for 25 °C and cut-off voltage 10.5 V	20h	18,0 Ah
	10h	15,8 Ah
	5h	13,5 Ah
Internal resistance	charged battery	17,0 mΩ
	for 20°C	100%
	for 0°C	85%
Capacity	for -15°C	65%
	3 m-ths	91%
	6 m-ths	82%
Self-discharge	12 m-ths	64%
	Terminal	Insert M5 (T13) Bolt and nut M5 (T3) – version F
Charging	Standby use	13,50-13,80V
	Cyclic use	14,40-15,00V
Max. charge current	5,0 A	
Max. discharge current	160 A (5 sec.)	

Input-discharge at 25 °C



Terminal



Temperatures of work:
 Discharging: -20°C ÷ 50°C
 Charging: -20°C ÷ 50°C
 Storage: -20°C ÷ 50°C