

PRODUCT MANUAL
Intelligence, technology, security



When you unbox the device, your first step should be to use the included AC adapter and Micro-USB cable to plug your V380 camera in, and follow these steps to complete your setup.

Note: The camera requires a SD card to store video recordings, accessories do NOT include any SD cards, please purchase one separately.

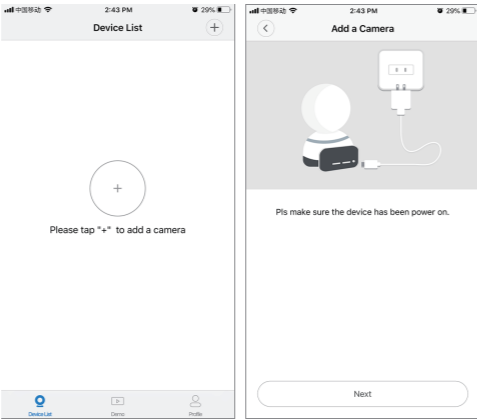
Getting started

Scan the below QR code with mobile phone to download "V380 Pro", besides, it's available to install "V380 Pro" through Google Play Store or App Store.

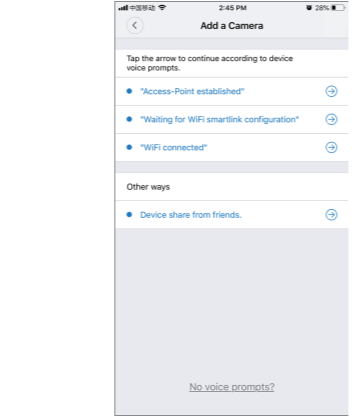


Once the camera is power on, follow the steps below to complete the setup:

1. Tap " + " and then tap " Next ".



2. Wait until you hear "Access-Point established" or "Waiting for WiFi smartlink configuration", now you can start connecting the camera to Wi-Fi.



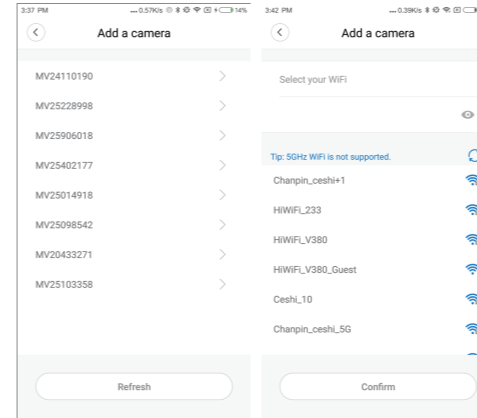
3. If you hear the camera voice prompt "Access-Point established", choose method **A** or **B** to configure the camera.

4. If you hear the camera voice prompt "Waiting for WiFi smartlink configuration", choose method **C** to configure the camera.

A.AP quick configuration

Android:

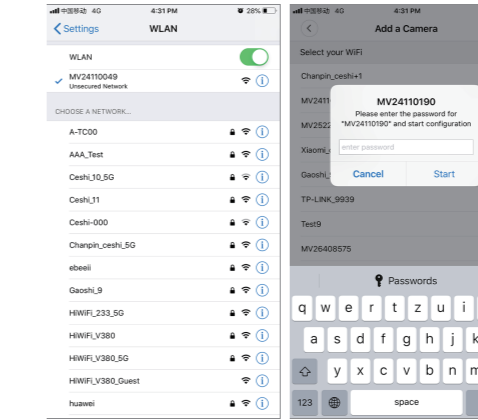
- Tap "Access-Point established", MV+ID will be shown, tap it to proceed.
- Choose your Wi-Fi network, enter the password, tap "Confirm", and the camera will start connecting Wi-Fi.
- Once you hear the camera voice prompt "WiFi connected", it will be shown on device list.
- The last step for setting up your camera is to set a password for the camera.



iOS:

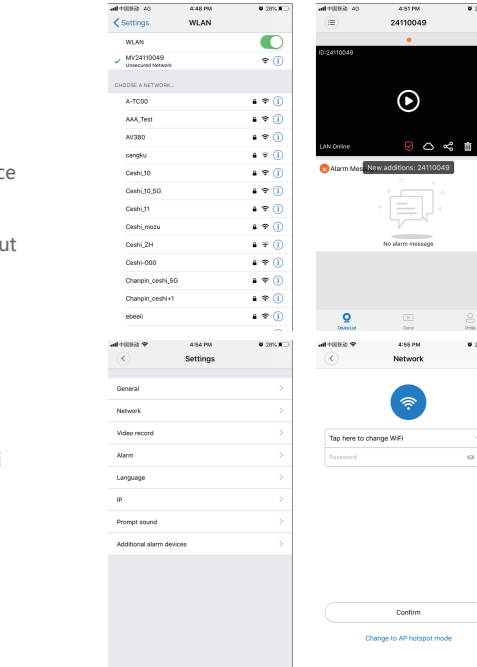
- Tap "Access-Point established", go to your Phone settings, tap "Wi-Fi" and connect "MV+ID".
- Wait for the status bar to display "wifi" icon, and then return to the App, tap "Next".

- Choose your Wi-Fi network, enter the password, tap "Confirm", and the camera will start connecting Wi-Fi.
- Once you hear the camera voice prompt "WiFi connected", it will be shown on device list.
- The last step for setting up your camera is to set a password for the camera.



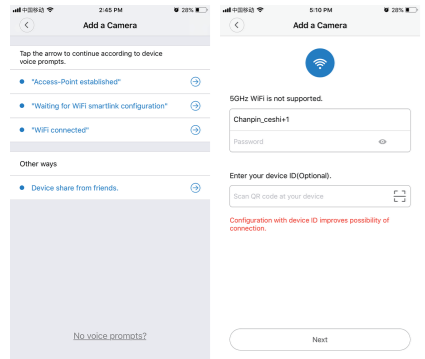
B.AP Hot spot configuration

- Go to your phone settings, tap "Wi-Fi" and connect "MV+ID".
- Wait for the status bar to display "wifi" icon, and then return to the App, pull down the device list, the device will be shown on the list.
- You are now able to view live stream on LAN, but in order to achieve remote view, you need to proceed the following steps:
Tap "setttings" — "network" — "change to wi-fi station mode", then choose your Wi-Fi network, enter the password, tap "confirm", and the camera will start connecting Wi-Fi.
- Once you hear the camera voice prompt "WiFi connected", the camera is ready to use.



C.wi-fi smart link configuration

- Tap “Waiting for WiFi smartlink configuration”, enter Wi-Fi password, you can also enter camera ID, and then tap “Next” .
- Once you hear the camera voice prompt “WiFi connected”, it will be shown on device list.
- The last step for setting up your camera is to set a password for the camera.



Preview

Here are feature introductory pictures for the preview, tap play button to start previewing.

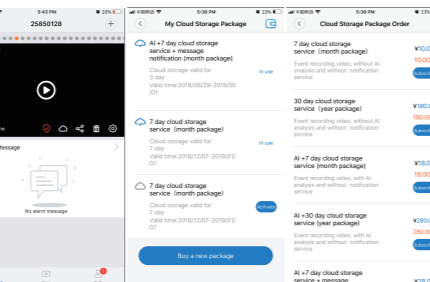


Cloud storage

When the camera captures moving object, alarm will be triggered, alarm video will be uploaded to cloud, users are able to access cloud recordings even the device or SD card gets stolen.

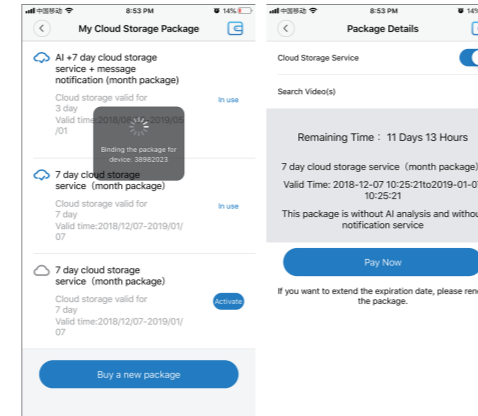
Buy a package

- Tap cloud icon ☁ .
- Tap “Buy a new package” .
- Tap “Subscribe”, now you have ordered a package.



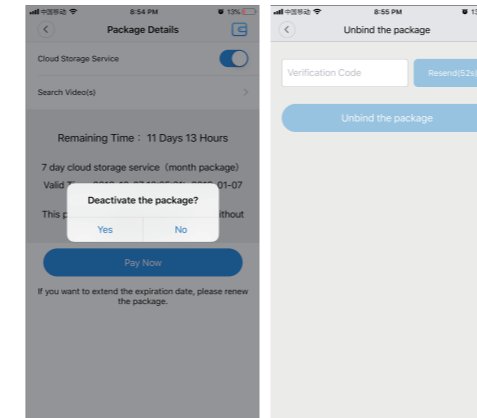
Activate the package

Tap “Activate”, now the cloud service comes into effect.



Deactivate the package

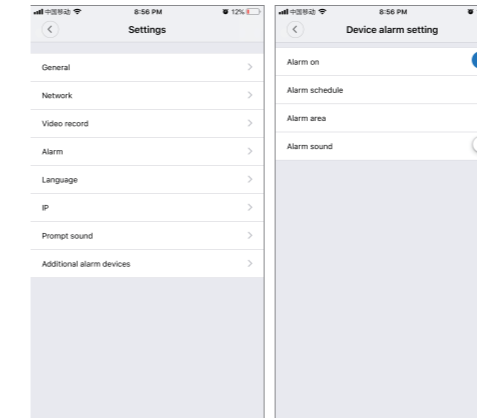
- Disable “Cloud Storage Service” .
- Tap “Verify Code”, the verification code will be sent to your phone or e-mail which you use to register App account.



Alarm settings

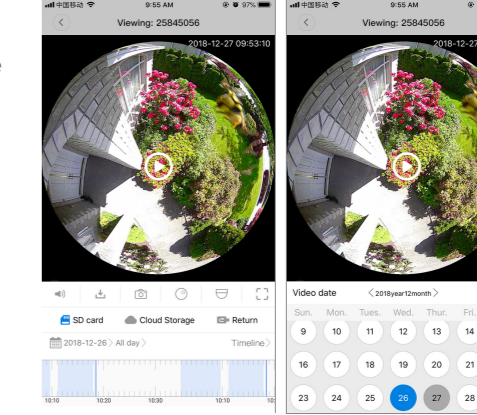
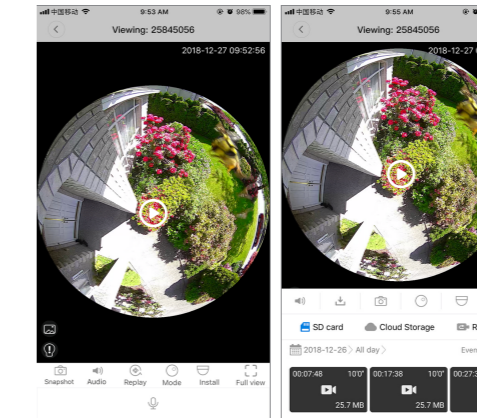
When camera detects moving object, it will send a notification to the App.

Tap “Settings”, then tap “Alarm” enable it.



Replay

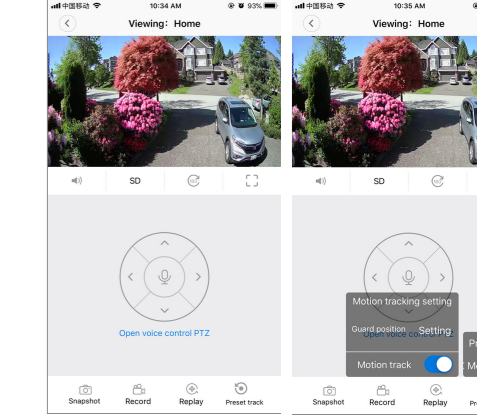
Enter preview interface, tap “Replay”, you can choose SD card or cloud recordings, choose a date to find recordings in a specific date.



Motion tracking

Motion tracking is enabled, camera targets and tracks the moving object it detects. You can find the option on preview interface.

Tap “Preset track”, then Enable “Motion track” .



Thanks for your reading!