

SZ-120-36M

Warranty

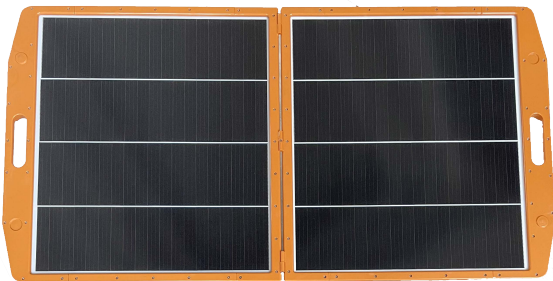
- ◆ 2 years Manufacturer Warranty
- ◆ Warranty on Electrical Performance:
5 years 80% of power output.

Manufacturing

- ◆ Original cell sorting system ensures the best electric cell match
- ◆ EL-Testing before packing.
- ◆ Comprehensive module power testing.

Performance

- ◆ Upgraded module efficiency and portability.
- ◆ Weakened hot-spot effect, lower module failure rate and increased stability by shingle-tech.
- ◆ Optimized performance under low light conditions.
- ◆ Unique cell connection method lowers the internal resistance and ensures better performance than traditional connection with busbar.
- ◆ Solar charging controllers integrated



Mechanical Data

Standard Test Conditions AM=1.5, E=1000W/m², TC=25°C

Nominal Power	120W
Cell Type	Monocrystalline
Module Efficiency	19.83%
Maximum Power Current (Impp)	6.06A
Maximum Power Voltage (Vmpp)	19.80V
Open-circuit Voltage (Voc)	23.40V
Short-circuit Current (Isc)	6.58A
Surface Material	Glass
Output Tolerance	±3%
Charging Current (Controller)	20A MAX
Float Charging Voltage (Battery)	13.7V
Discharging Cut-off Voltage (Battery)	10.7V
Charging Recovery Voltage (Battery)	13.0V
Discharging Recovery Voltage (Battery)	12.6V
Working Temperature	-40°C~+80°C

Packaging

Folded Dimensions	570*705*58mm
Expanded Dimensions	1142*705*29mm
Module Weight	8.7kg
Pieces per Pallet	Free
Gross Weight per Pallet	Free
Pallet Dimensions	Free

SOLMAX NEW ENERGY B.V.

Address: Zonnebaan 23, 3542 EB Utrecht, the Netherlands

Tel: +31-307855708

Email: info@solarfam.nl

