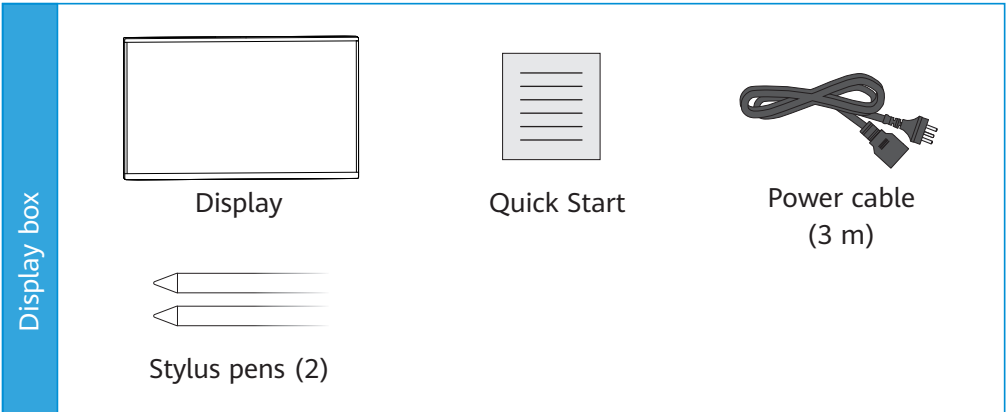


Quick Start

1 Included Items

- 🔍 This list is for reference only. The appearances of the components may differ from those included upon delivery. The components in this package can be used only with the display in this package. If a component is damaged, missing, or wet upon being removed from the box, contact technical support.



2 Installation Description

If you purchase rolling stands, install the device by referring to [Quick Start \(Floor-Mounted\)](#) in the package.

If you purchase wall-mount bracket, install the device by referring to [Quick Start \(Wall-Mounted\)](#) in the package.

- 🔍 1. Install the device on a vertical, load-bearing solid wall or concrete wall with more than 20 cm thickness. To install the device on other types of walls, reinforce the walls and verify the feasibility before installation. Verification method (for reference only): After installing the wall-mount bracket, perform a four-fold, one-minute load test on it (260 kg, 200 kg, and 160 kg for the 86-inch, 75-inch, and 65-inch models respectively). Ensure that screws are not loose or deformed after the test.
2. In recessed wall mount scenarios, reserve a 100 mm gap for heat dissipation between the display edge and recessed wall edge.

⚠️ You are advised not to use brackets that are not certified by us for installation.

Different models differ slightly in appearance. The appearances of the device and accessories in this document are for reference only.

Some models of large screens have a magnetic lens privacy cover. To avoid magnetic interference, you are advised to place the lens privacy cover on either side of the large screen.

- 🔍 Take and place all components gently to prevent them from falling.

⚠️ At least two, three, or four persons are required to lift and install a 65-inch, 75-inch, or 86-inch device respectively.

3 Connecting Cables

🔍 The port type and quantity vary depending on the host model. This part describes only common ports.



Power port

Connects the power cable after powering off the device.



USB Type-A port

Connects to a device such as a USB flash drive or IdeaShare Key.



USB Type-B port

Connects to a presentation source for reverse control.



USB Type-C port

Connects to a presentation source for projection and reverse control.



LINE IN and LINE OUT

Connects to 3.5 mm audio input and output devices.



HD-AI port

Connects to an HD audio device.



HDMI IN port

Connects to a presentation source for projection.



HDMI OUT port

Connects to a display or projector for dual-screen extension.



COM port

Connects the camera control cable.



LAN port

Connects the network cable.



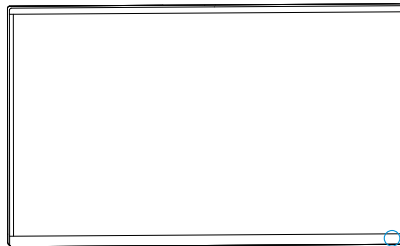
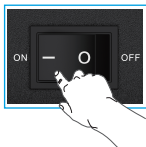
TOUCH port

Connects to the Touch.

4 Powering On the Device

🔍 When transporting a device from a low-temperature area to a high-temperature area, do not operate the device for a period of time until the dew is fully distributed, and then start the device.

After the power supply is connected, set the power switch of the display to **ON** and observe the indicator status.




If the status indicator is abnormal, contact technical support.

Indicator	Blinking green (2 blinks/second)	Rapidly blinking green (4 blinks/second)	Steady green	Breathing light, blinking green, gradually brighter or dimmer	Blinking red	Off
Status	Starting	Upgrading	Running	Sleep	Abnormal or faulty	Powered off

5 Configuring the Device

Upon first power-on of the device, follow instructions on the touchscreen UI to configure the device.

 By default, no password is required for accessing the **Advanced** screen. After the device is started for the first time or restored to factory settings, choose **Settings > Advanced > Security > Advanced Password** in the lower right corner of the home screen to configure a password.

Statement on a Class A Product

Warning: Operation of this equipment in a residential environment could cause radio interference.



Angaben zu einem Produkt der Klasse A

Warnhinweis: Der Betrieb dieses Geräts bzw. dieser Einrichtung kann im Wohnbereich Funkstörungen verursachen.

Wi-Fi


- Frequency bands: 2.4 GHz and 5 GHz
- Working frequency ranges: 2.4 GHz to 2.4835 GHz, 5 GHz to 5.85 GHz
- Max transmission power: less than 20 dBm at 2.4 GHz and less than 23 dBm at 5 GHz



HDMI™ The terms HDMI, HDMI High-Definition Multimedia Interface, HDMI Trade Dress and the HDMI Logos are trademarks or registered trademarks of HDMI Licensing Administrator, Inc.

Disposal and Recycling Information



 This symbol on the device and any included batteries indicates that they should not be disposed of as normal household garbage. Do not dispose of your device or batteries as unsorted municipal waste. They should be handed over to a certified collection point for recycling or proper disposal when they can no longer be used. For more detailed information about the recycling of the device or batteries, contact your local city office, the household waste disposal service, or the retail store where you purchased this device. The disposal of this device is subject to the Waste from Electrical and Electronic Equipment (WEEE) Directive of the European Union. The purpose for separating WEEE and batteries from other waste is to minimize any environmental impact and health hazards due to the presence of hazardous substances.

Reduction of Hazardous Substances

This device is compliant with the EU Registration, Evaluation, Authorization and Restriction of Chemicals (REACH) Regulation (Regulation No 1907/2006/EC of the European Parliament and of the Council) and the EU Restriction of Hazardous Substances (RoHS) Directive (Directive 2011/65/EU & (EU) 2015/863 of the European Parliament and of the Council).

Warranty Card

Thank you for choosing our products. Please read this warranty card carefully and fill in the required information. Keep the card in a safe place. If lost it cannot be replaced.

Registry

Your Name (or Company Name): _____

Contact		Invoice Number	
Address		Expiration Date	
Telephone		Dealer's Name	
Product Model		Dealer's Address	
Serial Number		Dealer's Telephone	

Dealer's Seal: _____

Limited Warranty

We warrant its products that are purchased from authorized dealers to be free from defects in materials and workmanship, under proper use and in normal conditions, during the expressed warranty period.

Special Notice:

1. The terms of warranty expressed in the purchase contract enjoy higher validity than the terms expressed within this card. This card is intended to be used solely as a warranty certificate.
2. The warranty card must be preserved in good condition and free of any scratch or alterations.
3. The warranty card must be presented to the authorized dealer when the product is being returned for repairs.

This warranty card does not cover defects caused by:

1. Modifications and alterations performed on the warranted product by parties other than authorized dealers.
2. Damage caused by using the product under inadequate operating environments.
3. Force majeure including but not limited to fires, earthquakes, lightning storms, and tsunamis.
4. Operations performed on the product unexpressed within User Guide.
5. Normal wear and tear of components, including but not limited to the shell and the power module.
6. The warranty card is altered or rendered illegible, or the product serial number recorded on the warranty card is inconsistent with the serial number imprinted or labeled on the product.

For cases not included within this limited warranty, not applicable, or where the warranty is rendered void or expired, we reserve the right to charge for the repair services should the said products be capable of being repaired.

We reserve the right to interpret this limited warranty.

Date: 2023-11-01
Part Number: 31500JQE
Issue: 01