

UC-260 Wireless Acoustic Indicator

The UC-260 can be used as a wireless indoor siren, a melody doorbell or as a chime. It can also function as a small house alarm. The UC-260 is compatible with Jablotron wireless control panels (JA-60 and JA-65), JA-60 wireless detectors and RC-11, RC-22 and RC-28 remote controls. Several triggering devices can be used simultaneously and different melodies can be assigned to each device. Two different sound levels can be selected. The UC-260 provides entrance and exit delay chirps too, when used with a control panel.

Specification

Power supply	230 V, 50 Hz
Power consumption	1.5 W
Acoustics	8 melodies and/or 110 dB/m alarm siren
Input wireless devices	max. 8 remote controls or detectors 1 control panel JA-60 or JA-65 11 according to EN60950
Class	II according to EN60950
Working frequency	433,92 MHz
Environmental conditions	interior -10 to +40°C
Safety standards	IP40 according to EN 60529, IEC 529

Installation

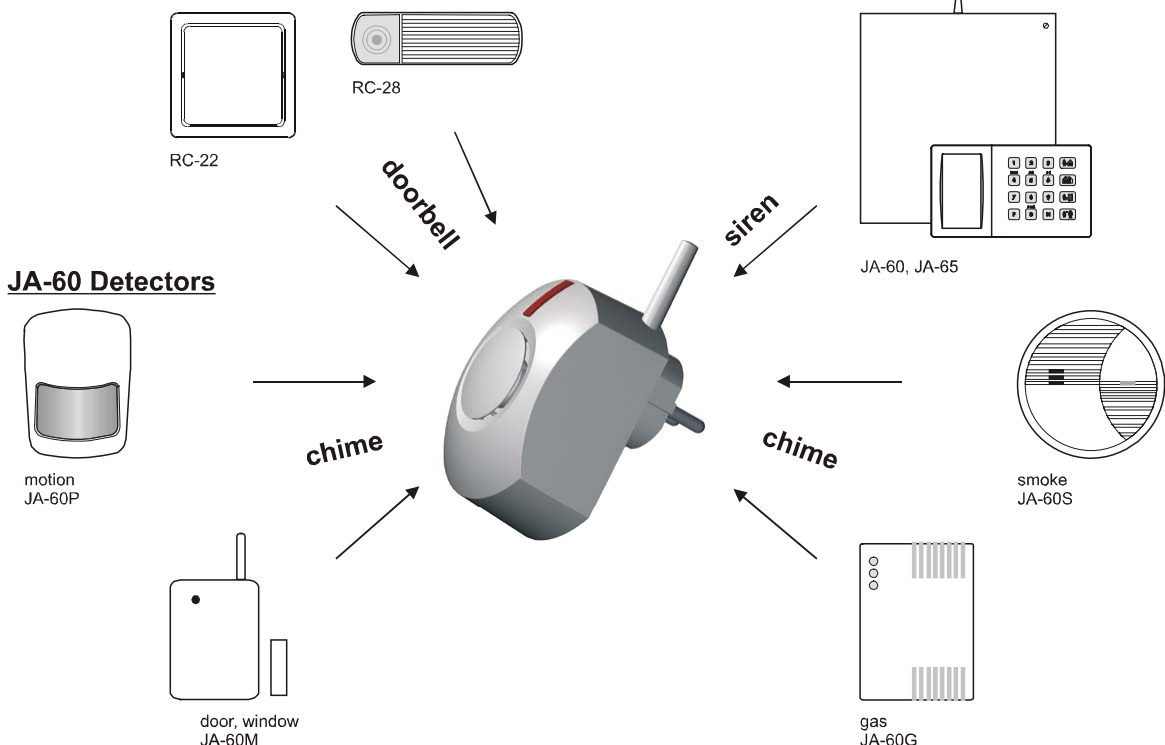
UC-260 is powered directly from a power outlet. The device should not be installed close to any metal structures or other objects obstructing radio signal transmission.

Enrolling of wireless components

1. **Press and hold the button on the top of the UC-260.**
2. **Plug in the UC-260 to an outlet** and hold the button until you hear 2 beeps.
3. **Release the button** – The button will begin to flash, indicating it is in the programming mode.
4. **Enrolling of components:**
 - **Doorbell button** (RC-11, RC-22, RC-28) can be enrolled by pressing a button on the controller. Multiple pressing of the controller's button will allow you to scroll to a desired melody.
 - **Detector - chime mode** (JA-60 detectors) can be enrolled by inserting batteries into a detector. If you remove the batteries and insert them again you can scroll to a desired melody (wait for 10 seconds before reinsertion).
 - **Control panel – siren mode** (JA-60 or 65) – while in the service mode of the control panel, enter code 299.
5. Up to 8 doorbell buttons or detectors can be used with one UC-260.
6. **Exit the programming mode** by pressing the UC-260's button briefly.

If you enter the programming mode the way above, all enrolled components will be erased from the memory.

Wireless controllers



Adding components

If you want to add additional doorbell buttons or detectors or if you want to select another melody for an existing component, than:

1. **Unplug the UC-260 from the outlet** and wait for 5 seconds.
2. **Plug it in again.**
3. **The button will light – press it and hold it down. After hearing a short beep, release the button.** The flashing button indicates it is in the programming mode.
4. **Enrolling new components** (or selecting another melody):
 - **Doorbell button** (RC-11, RC-22, RC-28) can be enrolled by pressing a button on the controller. Multiple pressing of the controller's button will allow you to scroll to a desired melody.
 - **Detector - chime mode** (JA-60 detectors) can be enrolled by inserting batteries into a detector. If you remove the batteries and insert them again you can scroll to a desired melody (wait for 10 seconds before reinsertion).
5. **Control panel – siren mode** (JA-60 or 65) – while in the service mode of the control panel, enter code 299. Up to 8 doorbell buttons or detectors can be used with one UC-260.
6. **Exit the programming mode** by pressing the UC-260 button briefly.

Deleting components

Press and hold a button on the UC-260 and plug the UC-260 into the mains outlet. Two beeps can be heard and all components will be erased.

Loudness selection

- The UC-260 must be in its operating mode (plugged in).
- Press and hold the button down.
- After 2 sec you will hear a melody with the new loudness selected
- Release the button.

This way you can toggle between a standard and a quieter one. This setting doesn't affect the alarm siren sound.

Doorbell mode

After pressing a doorbell button, the UC-260 will play a selected melody. Different melodies can be chosen for each button, if desired. If you want to change a melody, enter the programming mode (See Adding components) and press the button until a desired melody is selected.

Detector chime mode

If an enrolled detector is triggered, the UC-260 will play a chosen melody. The melody can be changed if desired (See Adding components).

A detector enrolled to the UC-260 can be enrolled to a JA-60 or JA-65 security control panel too. For example, this way a wireless door detector can activate a chime with the UC-260 and at the same time it can trigger an alarm system.

Note: JA-60P motion detector uses a special sleeping mode feature (can be set to 5 min. or 1 min.). Therefore it cannot detect more frequent movements in a covered area.

Alarm mode

The UC-260 can be used as a simple stand-alone wireless alarm. This mode can be combined with the doorbell mode too.

In order to set the alarm mode enter the programming mode first. Then press and hold both buttons of RC-11 for 3 sec. This RC-11 will be then used for arming and disarming the alarm. You can add more remote controls later. Up to 8 detectors, remote controls or doorbell buttons can be used in an alarm mode.

Controlling the alarm

If you press the A button of the remote control, you will arm the alarm. For delayed JA-60 detectors, a 15 seconds exit delay will be allowed. Beeping can optionally indicate an exit delay.

If you press the B button of the remote control, you will disarm the system.

If you activate a detector set to a delayed mode when the alarm is armed, you will hear entrance delay beeping (15 sec.) first.

If the alarm is not disarmed with in this period the siren will go off for 3 minutes. You can stop the siren by pressing the B button of the remote control.

Wireless siren mode

If a control panel is enrolled to a UC-260, the UC-260's light indicator copies the status of the PgY control panel output. If an alarm is triggered, the siren of the UC-260 sounds. Also an exit and entrance delay can be indicated. The exit and entrance delay can be set in two ways:

1. When a control panel is enrolled and one beep is heard, than both exit and entrance delays will be performed regardless of the control panel's setting.
2. When two beeps are heard, the UC-260 copies the control panel's setting of the exit and entrance delays.

You can toggle between these two settings each time you enroll the control panel to the UC-260 (entering 299 code while in the service mode).

Exit and Entrance delay setting

Description above corresponds to a factory setting of the UC-260. It can be changed using an enrolled RC-11 remote control while the UC-260 is in its programming mode.

- Press A button – alarm will indicate exit delay but not entrance delay, detectors trigger a siren when the alarm is armed. (*Factory setting*)
- Press B button – alarm will not indicate exit and entrance delay; detectors trigger a siren when the alarm is armed.
- Press both buttons – alarm will indicate exit and entrance delay, detectors trigger a siren when the alarm is armed and the first enrolled detector (enrolled before RC-11) activates a chime function.

Note: Alarm mode cannot be selected if a JA-60 or JA-65 control panel has been enrolled.

- **If you need to replace batteries in a detector,** it is necessary to unplug the UC-260 first! Otherwise opening a cover of a detector will trigger a tamper alarm.

JA-60 Detectors

