



TC-C35XS Spec:I3/E/Y/C/H/2.8mm/V4.0

Turret Camera

Lite Series



KEY FEATURES

- Metal+plastic housing
- Up to Max. Resolution
- S+265/H.265/H.264B/H.264M/H.264H
- Color:0.002Lux@(F1.6,AGC ON),B/W:0Lux with IR
- IR Range 30m
- Built-in Mic
- Support microSD/microSDHC/microSDXC card, up to 512 GB
- Support Smart surveillance
- Operating Conditions -40°C~65°C(No turning on the light), Humidity 95% or less (no condensation)
- DC12V±25%,MAX 6.5W, POE 802.3af,MAX 7W
- IP66

SPECIFICATIONS

| Camera | |
|----------------------|--|
| Image Sensor | 1/2.8"CMOS |
| Min. Illumination | Color:0.002Lux@(F1.6,AGC ON),B/W:0Lux with IR |
| Shutter Time | 1s~1/100000s |
| Day&Night | IR-cut filter with auto switch (ICR) |
| WDR | 120dB |
| S/N | >42dB |
| Angle Adjustment | 0~340°(P); 0~75°(T); 0~360°(R) |
| Lens | |
| Lens Type | Fixed focal lens |
| Focal Length | 2.8mm |
| Lens Mount | M12 |
| Aperture Range | F1.6 |
| Field of View | 94.7°(H); 52.5°(V); 118.5°(D) |
| DORI Distance | Detect:56.0m Observe:22.2m Recognize:11.2m Identify:5.6m |
| Illuminator | |
| IR LEDs | 2 |
| IR Distance | 30m |
| Wavelength | 850nm |
| Compression Standard | |
| Video Compression | S+265/H.265/H.264B/H.264M/H.264H |
| Video Bit Rate | 32k~6Mbps |
| Audio Compression | G.711A/G.711U/ADPCM_D |
| Audio Sampling Rate | 8kHz/32kHz/48kHz |
| Image | |
| Main Stream | PAL:20fps(2592×1944), 25fps(2592×1520, 2560×1440, 2304×1296, 1920×1080, 1280×720) NTSC:20fps(2592×1944), 24fps(2592×1520, 2560×1440), 30fps(2304×1296, 1920×1080, 1280×720) |
| Sub Stream | PAL:25fps(704×576, 704×288, 640×360, 352×288) NTSC:30fps(704×480, 704×240, 640×360, 352×240) |
| BLC | Yes |
| HLC | Yes |
| AGC | Yes |
| 3D DNR | Yes |
| White Balance | Auto/Semi-Auto/Manual/Sunshine/Nature Light/Warmlight Lamp/Daylight Lamp/Filament Lamp/Lock White Balance |
| ROI | 8 rectangular static areas |

| | |
|--------------------------------------|--|
| OSD | Overlay of additional characters in 1 regions, 1 line, with a maximum of 48 characters or 16 Chinese characters per region; 16*16/32*32/48*48/64*64 |
| Privacy Mask | 4 black static areas |
| Defog | Yes |
| Feature | |
| Alarm Trigger | Motion Detection; Mask Alarm; Disk Full; Disk R/W Error; IP Address Conflict; Event Input, Event Output |
| Linkage Method | trigger recording; trigger capture; notify surveillance center |
| Video Analytics | Tripwire; Perimeter |
| Rules of behavior analyse in 1 scene | 2 |
| Network | |
| ANR | Yes |
| Protocols | HTTP; HTTPS; TCP/IP; UDP; UPnP; ICMP; DHCP; DNS; DDNS; Easy DDNS; NTP; QoS; IPv4; SSH; Unicast; RTSP; FTP |
| System Compatibility | P2P(Mutually exclusive with Profile G); ONVIF Profile S/T/G; CGI; Milestone |
| Remote Connection | ≤2 |
| Client | Easy7 Smart Client |
| Moblie Client | EasyLive Plus |
| Interface | |
| Communication Interface | 1*RJ-45,10/100 Mbps self-adaptive Ethernet port |
| Audio I/O | 1; 1 |
| Alarm I/O | 1-ch,TTL input,3mA,3.3VDC; 1-ch,TTL output,30mA,12VDC |
| Reset Button | Yes(Built-in) |
| On-board storage | Support microSD/microSDHC/microSDXC card, up to 512 GB |
| RTC | Yes |
| General | |
| Web Client Language | 19 languages Simple Chinese/Traditional Chinese/English/Spanish/Korean/Italian/Turkish/Russian/Thai/French/Polish/Dutch/Hebrew/Arabic/Vietnamese/German/Ukrainian/Portuguese/Albanian |
| Operating Temperature | -40°C~65°C(No turning on the light) |
| Operating Humidity | Humidity 95% or less (no condensation) |
| Storage Temperature | -40°C~65°C |
| Storage Humidity | Humidity 95% or less (no condensation) |
| Power Supply | DC12V±25%,MAX 6.5W; POE 802.3af,MAX 7W |
| Protection | Surge4000V; ESD6000V; IP66 |
| Boundary Dimensions | 117(L)117(W)96(H)mm |
| Package Dimensions | 140(L)140(W)120(H)mm |
| GrossWeight | 0.53kg |

DIMENSIONS (Unit: mm)

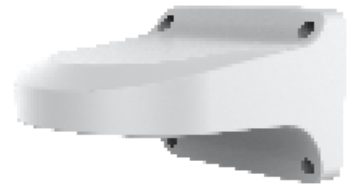
Assembly diagram of Junction Box



TC-P54BM Spec:V5



A36



A29