

Gas nailer

FORCE ONE



The best gas nailer in its class
- with extensive range of accessories



Gas nailer FORCE ONE



Advantages, approvals and certificates



Suitable building materials



Versatile use in different base materials such as steel, concrete, solid bricks and limited in wood. Can be used on floors, walls and ceilings.

Applications

Electrical Installations

Fastening of various light electrical installations [cables, conduits, cable channels, lamp suspensions etc.]

HVAC sector

Fixing of heating pipes, ventilation channels etc.

Drywall construction

Fastening of drywall profiles

On the façade / tunnel construction / motorways

Fastening of insulating mats, moisture-repellent foils, protective material for floor coverings, fleece

Technical data of gas nailer FORCE ONE

Characteristics	Technical data
Height	365 mm
Width	124 mm
Length	334 mm
Weight	3.6 Kg (with battery included)
Loading capacity	FORCE ONE 20: 20 + 2 nails* FORCE ONE 40: 40 + 2 nails*
Type of battery	NiMH-battery (battery lasts for 3.000 nails)
Capacity of battery	6V DC, 1.5Ah
Power consumption (Rated output)	8VA (10V 800mA)
Connection charger	100-240V AC. (50 or 60Hz)
Charging time	max. 120 minutes
Temperature range for use	-10°C to +40°C

* There must be at least 2 nails in the magazine, otherwise the nailer cannot be triggered.

Main features / Advantages



Powerful

Setting energy of 105 Joule for high fastening quality [steel thickness up to 5 mm]



Constant power

Consistent gas injection regardless of temperature



Long lasting battery

up to 3000 fastenings per charge



Versatile

nails from 13 to 38 mm length for many different applications



Short contact pressure

enables fatigue-free working, especially with overhead installation



Quick

up to 2.5 nails per second



Good accessibility

even in narrow places due to the slim design and the extended nose



3,6 kg

Lightweight

with only 3,6 kg including battery the FORCE ONE is the lightest gas nailer in its class



Highly effective dust protection

Clever filter systems at the suction and discharge openings



Ergonomic handle

relieves the hands during longer use



Very well balanced

due to the special positioning of the gas cartridge



Smart

Computer-controlled intelligent ventilator adapts to the environment



Simple and fast adjustable tool nose



Removable magazine footer



Laterally adjustable device hook



LED display

prevents unexpected work interruptions in case the battery is low

Set includes

- 1 x Gas nailer FORCE ONE
- 1 x Safety goggles
- 2 x Ear plugs
- 2 x Battery
- 1 x Charger
- 1 x Carrying case
- 1 x Jam clear tool
- 1 x Instruction manual



FORCE ONE



2x Battery



1x Jam clear tool



1x Charger



Gas nailer FORCE ONE

Type	Art-No	€/1 pc	[Set]	[pcs]
FORCE ONE with magazine for 20 nails	FONE20		1	-
FORCE ONE with magazine for 40 nails	FONE40		1	-



Battery and charger for gas nailer FORCE ONE

Type	Art-No	€/1 pc	[pcs]	[pcs]
FORCE ONE Battery	FONEBAT		1	-
FORCE ONE Charger	FONECARSET		1	-



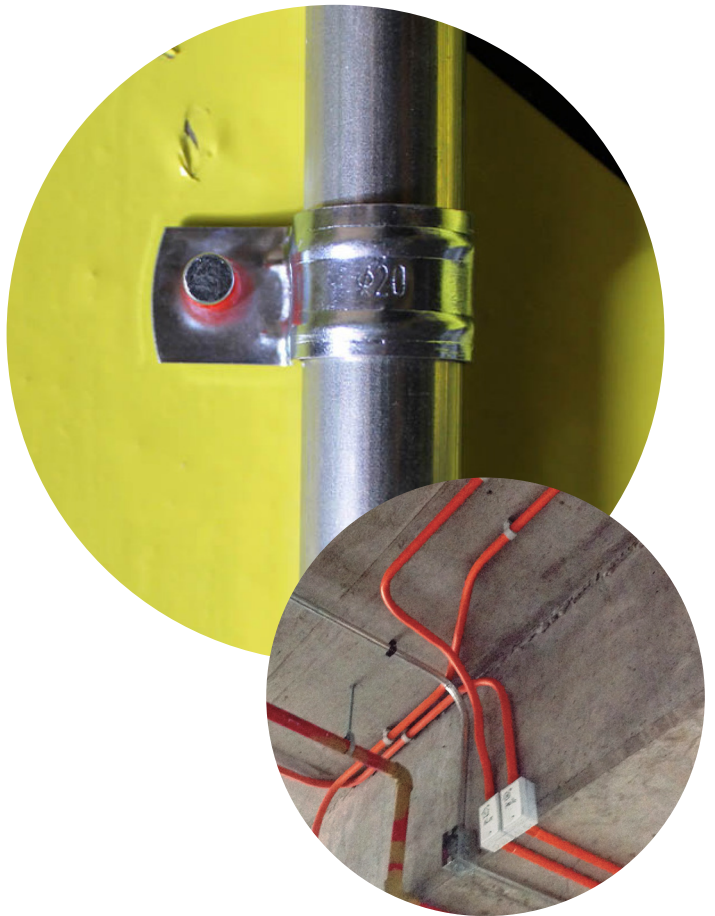
High-performance gas for gas nailer FORCE ONE



Type	Art-No	Height [mm]	Content [ml]	€/1 pc	[pcs]	[pcs]
Fuel cell*	9GASFONE	180	80		1	20

* sufficient for min. 800 nails

Steel nails FORCE ONE XHA & TKA



Advantages



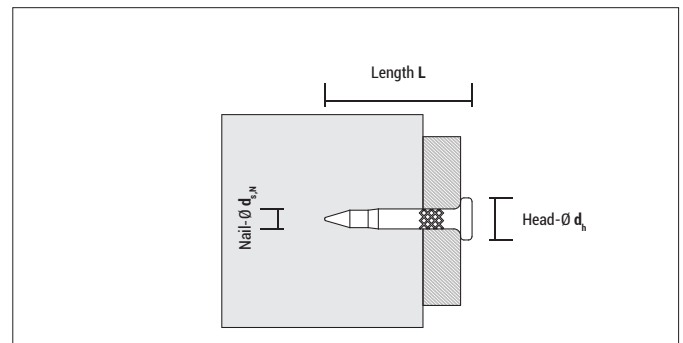
XHA premium nails for gas nailer FORCE ONE



TKA standard nails for gas nailer FORCE ONE

- XHA:
 - Premium nails; suitable for hard concrete and steel
 - Nail 13 mm especially hardened for steel
 - Grooved nails to improve grip
- TKA: standard nails for concrete and solid bricks
- Each box includes one high-performance fuel cell, sufficient for 800 nails

Mounting



Approvals and certificates



XHA premium nails for FORCE ONE

+ each box includes one high-performance fuel cell



Type	Art-No	Nail-Ø $d_{s,N}$ [mm]	Length L [mm]	Head-Ø d_h [mm]	€/100 pcs	[pcs]	[pcs]
XHA premium nails 13 mm + fuel cell	913800XHA	3	13	6,3		800	4.000
XHA premium nails 17 mm + fuel cell	917800XHA	3	17	6,3		800	4.000
XHA premium nails 22 mm + fuel cell	922800XHA	3	22	6,3		800	4.000
XHA premium nails 27 mm + fuel cell	927800XHA	3	27	6,3		800	4.000
XHA premium nails 32 mm + fuel cell	932800XHA	3	32	6,3		800	4.000
XHA premium nails 38 mm + fuel cell	938800XHA	3	38	6,3		800	4.000

Steel nails FORCE ONE



+ each box includes one high-performance fuel cell



TKA standard nails for FORCE ONE

Type	Art-No	Nail-Ø d _{s,N} [mm]	Length L [mm]	Head-Ø d _h [mm]	€/100 pcs	[pcs]	[pcs]
TKA nails 19 mm + fuel cell	919800TKA	2,6	19	6,3		800	4.000
TKA nails 25 mm + fuel cell	925800TKA	2,6	25	6,3		800	4.000

Overview - Suitable building materials for nails XHA and TKA

	XHA 13 mm	XHA 17 mm	TKA 19 mm	XHA 22 mm	TKA 25 mm	XHA 27 mm	XHA 32 mm	XHA 38 mm
Steel (min. thickness 3,5 mm)	●							
Concrete > C20/25		●		○				
Concrete C20/25		○	●	●	●	○		
Solid brick		○	●	●	●	●	○	
Hollow brick					●	●	●	
Wood								●

● very suitable

○ suitable to a limited extent

Compatibility CELO gas nailer accessories

CELO Accessories	CELO gas nailers	
	FORCE ONE	FOX
XHA 	✓	✓
TKA 	✓	✓
GASFONE 	✓	X
GASA FOX 	X	✓
ABT 	✓	✓
UT 	✓	✓
TPC/TPLC 	✓	✓
WSC 	✓	✓
WDC 	✓	✓
TBB 	✓	✓
NTBB grey 	X	X
TBL 	✓	✓
TBD 	✓	✓
TBM 	✓	✓
FP 	✓	✓
FPD 	✓	✓
FT 	✓	✓
CHS 	✓	✓
PFT 	✓	✓
DFT 	✓	✓
ATR M6 	✓	✓
ATR M8 	✓	✓
ATV 	✓	✓
ATVS 8 	✓	✓
AAT 	✓	✓
AW 	✓	✓
AP 	✓	✓
TXS 	✓	✓

The gas nailer accessories from CELO are compatible with many other gas nailers!

Scan here to download comparison table:

